

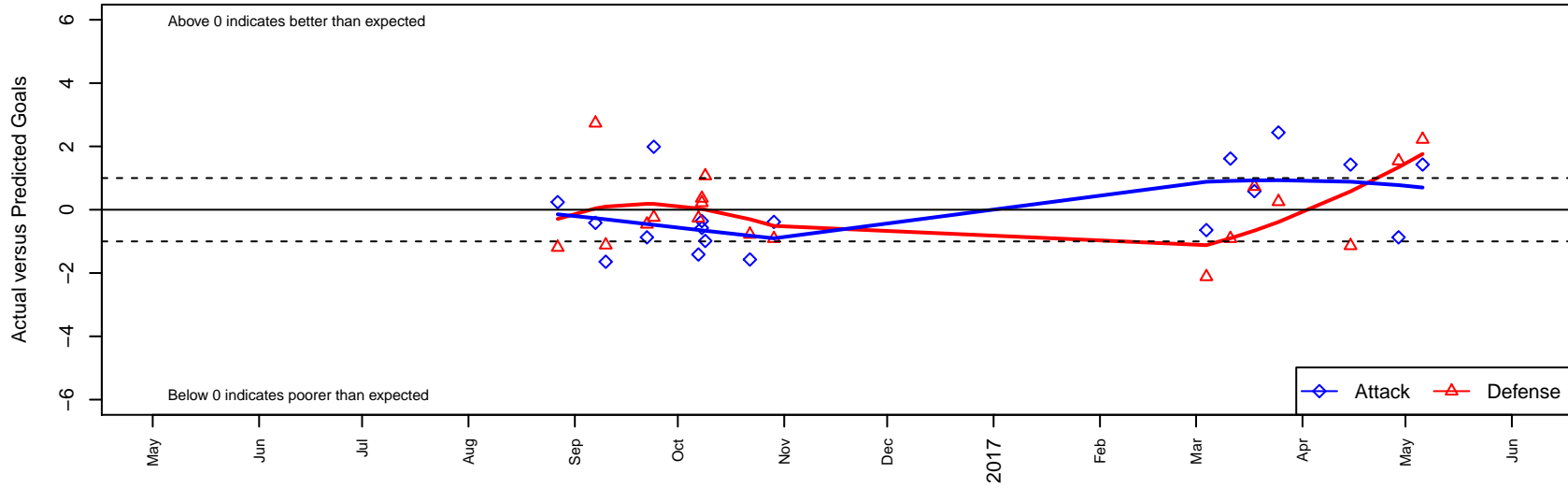
FC Alianza B06

, ID
 B06 total strength=355
 attack=0.32 defense=0.14
 fall league = Idaho D3 U11 South U11
 spr league = Spr Idaho D3 U11 South

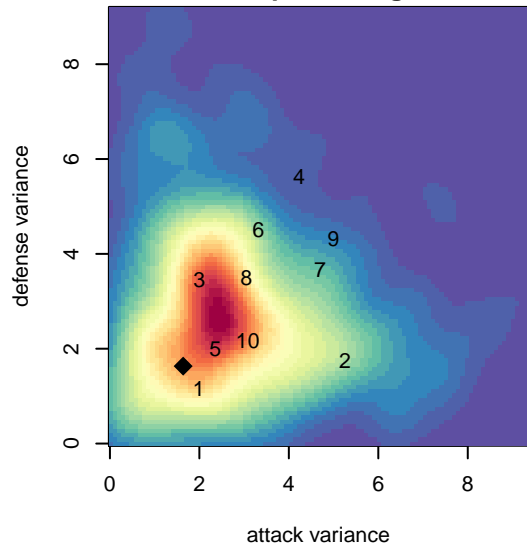
alt names used:
 FC ALIANZA (ID)
 FC ALIANZA
 FC ALIANZA

Venues played:
 2016 Idaho D3 U11 South U11
 2016 GEM State Challenge U11B Silver East U
 2016 Spr Idaho D3 U11 South

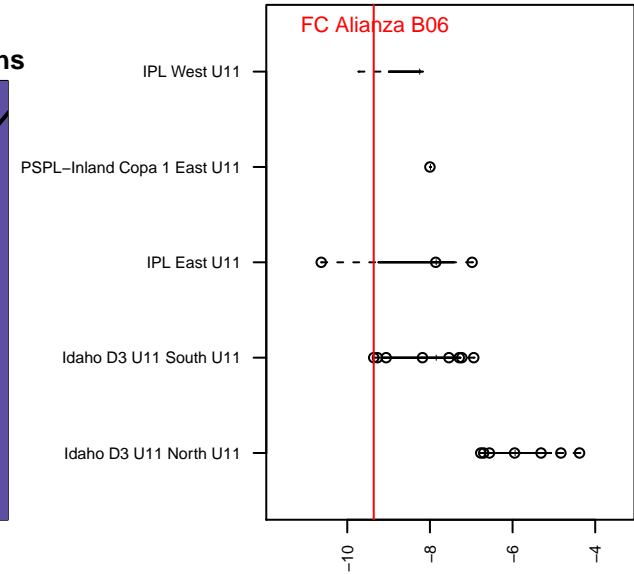
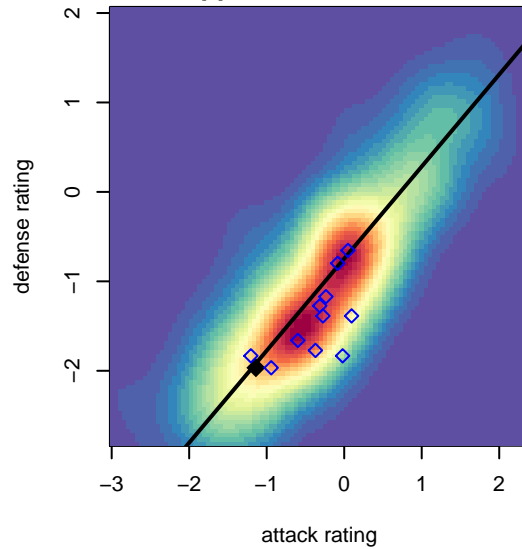
FC Alianza B06
 Dots are actual minus expected GF (blue circles) and GA (red triangles).
 Blue line is smoothed change in attack strength. Red is smoothed change in defense strength.



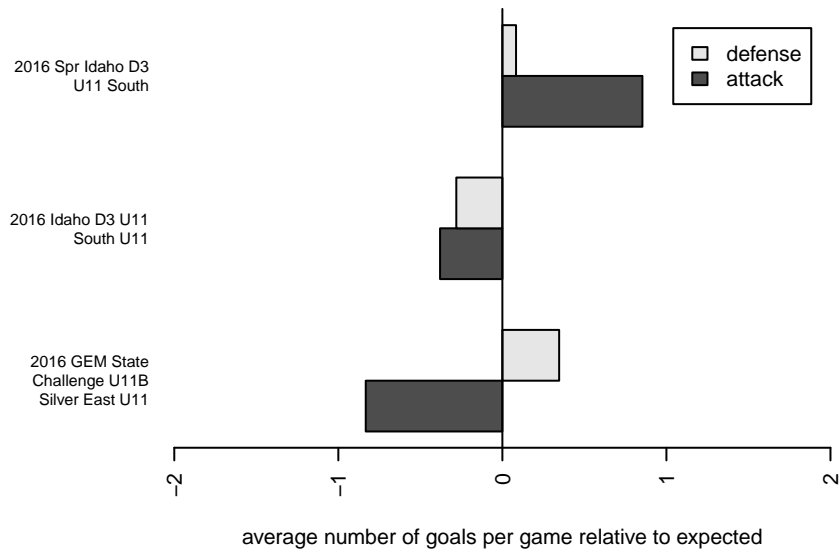
**attack and defense variance (black dot)
relative to other teams
and top 10 in region**



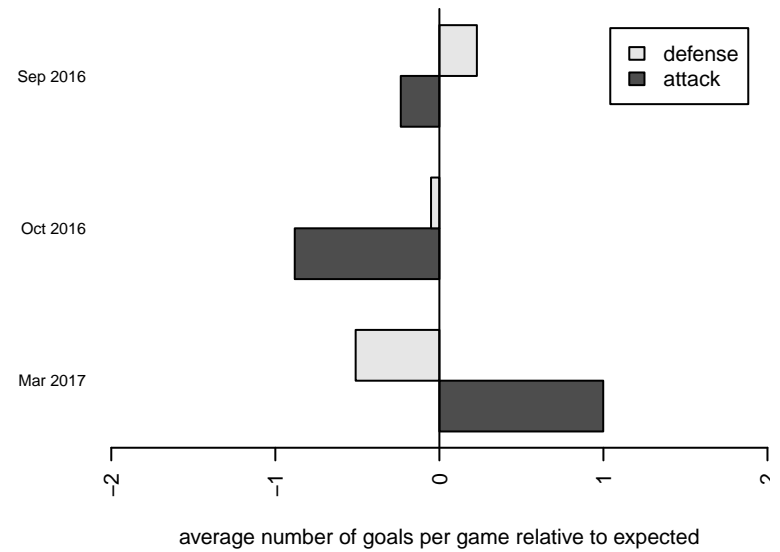
**attack and defense rating
relative to others at age
and all opponents in last 13 months**



Performance relative to 13 month average



Performance relative to 13 month average



| date | home | | away | | venue | pred.home | pred.awa |
|-------------|-----------------------------------|---|-----------------------------------|---|--|------------------|-----------------|
| 17-05-06 | FC Nova Red JP B06 | 0 | FC Alianza B06 | 3 | 2016 Spr Idaho D3 U11 South | 2.22 | 1.57 |
| 17-04-29 | FC Alianza B06 | 0 | Canyon Optimist Inferno B06 | 4 | 2016 Spr Idaho D3 U11 South | 0.87 | 5.54 |
| 17-04-15 | Twin Falls Rapids B06 | 8 | FC Alianza B06 | 2 | 2016 Spr Idaho D3 U11 South | 6.86 | 0.57 |
| 17-03-25 | FC Alianza B06 | 4 | Weiser All-Stars B06 | 5 | 2016 Spr Idaho D3 U11 South | 1.56 | 5.25 |
| 17-03-18 | Idaho Arsenal United B06 | 6 | FC Alianza B06 | 2 | 2016 Spr Idaho D3 U11 South | 6.73 | 1.41 |
| 17-03-11 | FC Alianza B06 | 3 | Idaho Rush Black B06 | 5 | 2016 Spr Idaho D3 U11 South | 1.39 | 4.09 |
| 17-03-04 | Boise Nationals Timbers Green B06 | 5 | FC Alianza B06 | 1 | 2016 Spr Idaho D3 U11 South | 2.88 | 1.64 |
| 16-10-29 | FC Alianza B06 | 1 | Idaho Rush Black B06 | 5 | 2016 Idaho D3 U11 South U11 | 1.39 | 4.09 |
| 16-10-22 | FC Alianza B06 | 0 | FC Nova Red JP B06 | 3 | 2016 Idaho D3 U11 South U11 | 1.57 | 2.22 |
| 16-10-09 | FC Alianza B06 | 0 | Boise Nationals Timbers Red B06 | 6 | 2016 GEM State Challenge U11B Silver Eas | 0.99 | 7.07 |
| 16-10-08 | FC Alianza B06 | 1 | FC Nova Red JP B06 | 2 | 2016 GEM State Challenge U11B Silver Eas | 1.57 | 2.22 |
| 16-10-08 | FC Alianza B06 | 0 | Jackson Hole United Black B06 | 8 | 2016 GEM State Challenge U11B Silver Eas | 0.36 | 8.36 |
| 16-10-07 | FC Alianza B06 | 0 | Idaho Arsenal United B06 | 7 | 2016 GEM State Challenge U11B Silver Eas | 1.41 | 6.73 |
| 16-09-24 | Sawtooth United Blue B06 | 6 | FC Alianza B06 | 3 | 2016 Idaho D3 U11 South U11 | 5.76 | 1.01 |
| 16-09-22 | Canyon Optimist Inferno B06 | 6 | FC Alianza B06 | 0 | 2016 Idaho D3 U11 South U11 | 5.54 | 0.87 |
| 16-09-10 | FC Alianza B06 | 0 | Boise Nationals Timbers Green B06 | 4 | 2016 Idaho D3 U11 South U11 | 1.64 | 2.88 |
| 16-09-07 | Idaho Arsenal United B06 | 4 | FC Alianza B06 | 1 | 2016 Idaho D3 U11 South U11 | 6.73 | 1.41 |
| 16-08-27 | FC Nova Red B06 | 7 | FC Alianza B06 | 1 | 2016 Idaho D3 U11 South U11 | 5.81 | 0.76 |